



# INDOFINE Chemical Company, Inc.

121 Stryker Lane, Bldg. 30, Suite 1 • Hillsborough, NJ 08844 • U.S.A.

Phone: (908) 359-6778 • FAX: (908) 359-1179

website: [www.indofinechemical.com](http://www.indofinechemical.com)

e-mail: [chemical@indofinechemical.com](mailto:chemical@indofinechemical.com)

## CERTIFICATE OF ANALYSIS

Catalog Number: 06-1414

Product Name: **(+)-PINORESINOL**

CAS Number: [487-36-5]

Lot Number: 1910345

Chemical Formula: C<sub>20</sub>H<sub>22</sub>O<sub>6</sub>

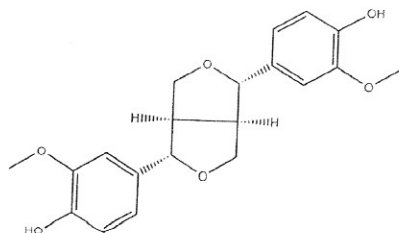
Molecular Weight: 358.39

Appearance: Off-white powder

Loss on Drying: 1.23%

Storage: Store in a cool, dry place. Protect from light.

Purity(HPLC): 98.83%



Prepared by:  
*Ramesh Mandadi*  
Ramesh Mandadi  
Director of Operations

Reviewed and Approved by:  
*Sujata Moton*  
Sujata Moton  
VP



# INDOFINE Chemical Company, Inc.

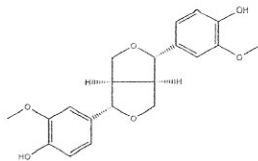
121 Stryker Lane, Bldg. 30, Suite 1 • Hillsborough, NJ 08844 • U.S.A.

Phone: (908) 359-6778 • FAX: (908) 359-1179

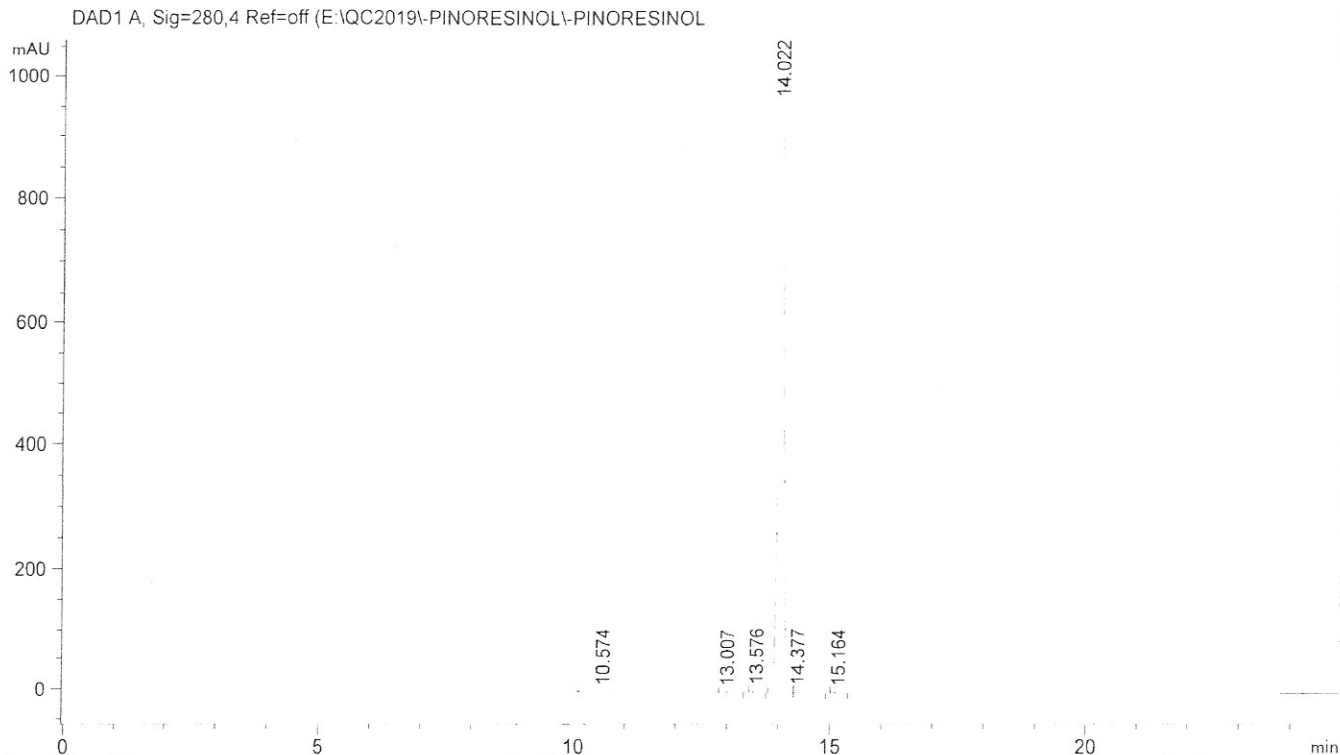
website: [www.indofinechemical.com](http://www.indofinechemical.com)

e-mail: [chemical@indofinechemical.com](mailto:chemical@indofinechemical.com)

## HPLC ANALYSIS



Catalog No.: 06-1414  
Product Name: (+)-Pinoresinol  
Lot No.: 1910345



1: DAD1 A, Sig=280,4 Ref=off

#	min		min	mAU*s	mAU	%
1	10.574	BB	0.1748	15.83433	1.22528	0.2205
2	13.007	MM R	0.1762	6.50099	6.15089e-1	0.0905
3	13.576	MM R	0.1094	23.92587	3.64645	0.3332
4	14.022	BV	0.1074	7096.32324	1017.48669	98.8332
5	14.377	VB	0.1246	25.88811	3.06352	0.3606
6	15.164	BB	0.1218	11.62767	1.44549	0.1619

7180.10022 1027.48252

Prepared by:  
*Ramesh Mandadi*  
Ramesh Mandadi  
Director of Operations

Reviewed and Approved by:  
*Sujata Moton*  
Sujata Moton  
VP